

GENERAL INFO

HUNTING SEASON

Bow hunting: May to August

Rifle hunting: March to September

Daytime temperatures vary from 75F to 32F at night.

HUNTING AREA

The main camp is located in the Zuurberg Mountain area, about 130 km's north of Port Elizabeth. The terrain is diverse, including mountains and big open flats. All hunting will be done in a malaria free area.

FIREARMS & AMMUNITION

- At least a .270 rifle and above but recommend a 300 Winchester Magnum or similar calibre.
- Shooting Distance: 50-300 yards
- When you land in South Africa you will acquire a permit for your rifles at customs. These forms must be kept with you at all times and must be returned at the airport when you leave South Africa.

ACCOMMODATION

Guests are accommodated in Coppermoon's modern lodge with all the necessities required. Including en suite bathrooms, warm water & Wifi.

MEDICAL FACILITIES

Good medical facilities are available in the closest town, Somerset East (~45 min drive). Port Elizabeth has 4 private hospitals with casualty departments. Emergency evacuation to Port Elizabeth by helicopter can be arranged.

NON-HUNTING ACTIVITIES

Game drives at Addo Elephant National Park, Mountain Zebra National Park and other various game reserves in the area can be offered.

GETTING HERE

You will arrive in Johannesburg or Cape Town and there you will collect your luggage and rifles, then proceed through immigration then customs. You will proceed to South African Police Services to process your import permits for your firearms. From there, you will proceed to Domestic Departures for your flight to Port Elizabeth. We will collect you from PE and drive about 1 and half hours to Coppermoon.

TRAVEL DOCUMENTS

South Africa requires a valid passport & visa for entry. Contact our embassy in your country for details. Anyone travelling to South Africa must have two consecutive blank pages in their passport.

WHAT WE NEED FROM YOU

In order to book your safari, we require the following:

- Full name, DOB and address
- Passport number, place and date of issue & expiry date
- Firearm make, model, calibre & serial number
- Your priority of trophies
- Any special catering requirements, allergies and/or disabilities



EASTERN CAPE, SOUTH AFRICA

WELCOME TO



COPPERMOON HUNTING SAFARIS



CONTACT US

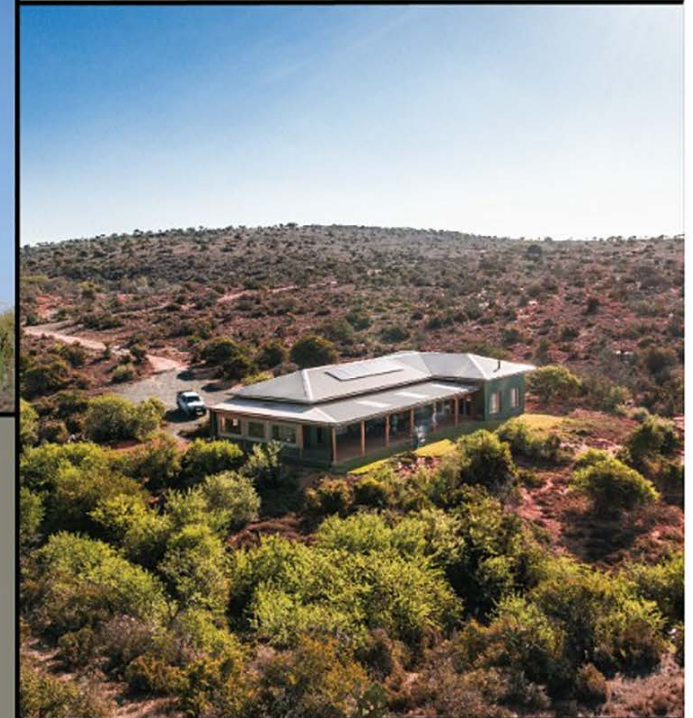
Coppermoon Game Farm
Somerset East, Eastern Cape
5800, South Africa

Phone: +27 65 848 7833

Email: denver@coppermoonhunting.com

Website: coppermoonhunting.com

COPPERMOONHUNTING.COM



COPPERMOONHUNTING.COM

PRICELIST



DAILY RATES

Day fee hunter. One guide, one hunter	\$450
Day fee hunter. Two hunters one guide.	\$350
Day fee non-hunter	\$200
Rifle hire per day	\$ 35

Baboon	\$400	Ostrich	\$400
Blesbuck	\$450	Red Hartebeest	\$850
Blesbuck White	\$600	Red Lechwe	\$1,700
Bushbuck	\$800	Roan	\$10,000
Bushpig	\$500	Sable	\$3,500 - \$5,500
Buffalo	\$10k - \$15k	Springbuck-Black	\$500
Caracal	\$1,000	Springbuck-Common	\$350
Duiker	\$350	Springbuck-Copper	\$800
Eland	\$2,000	Springbuck - White	\$700
Fallow Deer	\$800	Steenbuck	\$350
Gemsbuck/Oryx	\$1,100	Warthog	\$500
Giraffe	\$3,000	Waterbuck	\$1,800
Impala	\$450	Wildebeest - Black	\$850
Impala Black	\$3,500	Wildebeest - Blue	\$950
Klipspringer	\$1,500	Wildebeest - Golden	\$3,500
Kudu	\$1350	Zebra Burchell	\$950
Mountain Reedbuck	\$450	Zebra Cape Mountain	\$2,500
Common Reedbuck	\$1,500		
Nyala	\$1,500		

TERMS OF BUSINESS

1. All prices charged will be confirmed in writing
2. All prices are quoted in U.S. dollars
3. A 30% deposit is required to book
4. No travel or personal cheques
5. No tips, use gratitude

INCLUDED

- An unforgettable African hunting experience
 - Animals as listed above
 - Accommodation, food & beverages
 - Airport transfers
- Experienced local professional hunter
- Trained staff, trackers and skinners

EXCLUDED

- International and domestic flights
- Hire of firearms and ammunition
- Trophy fees on additional animals shot or wounded
 - Extra activities outside of Coppermoon
 - Tips for staff, PH's and curios
- Accommodation before and after safari

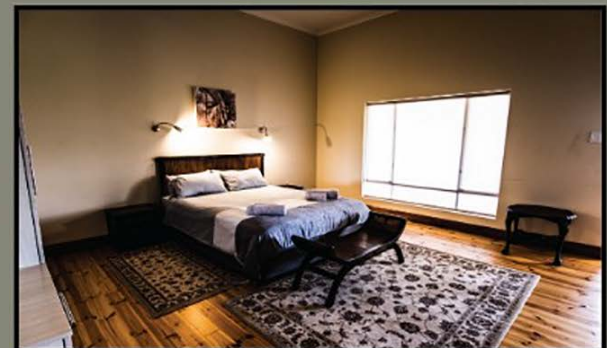
COPPERMOONHUNTING.COM

EASTERN CAPE HUNTING



COPPERMOONHUNTING.COM

COPPERMOON LODGE



COPPERMOONHUNTING.COM